



Marie Skłodowska-Curie Actions - an introduction



Henry Scott

MSCA National Contact Point, Greece



ΕΘΝΙΚΟ ΚΕΝΤΡΟ ΤΕΚΜΗΡΙΩΣΗΣ &
ΗΛΕΚΤΡΟΝΙΚΟΥ ΠΕΡΙΕΧΟΜΕΝΟΥ

The MSCA under Horizon Europe



Pillar I EXCELLENT SCIENCE

European Research
Council

Marie Skłodowska-Curie
Actions

Research Infrastructures



Pillar II GLOBAL CHALLENGES & EUROPEAN INDUSTRIAL COMPETITIVENESS

Clusters

- Health
- Culture, Creativity & Inclusive Society
- Civil Security for Society
- Digital, Industry & Space
- Climate, Energy & Mobility
- Food, Bioeconomy, Natural Resources, Agriculture & Environment

Joint Research Center



Pillar III INNOVATIVE EUROPE

European Innovation Council

European Innovation
Ecosystems

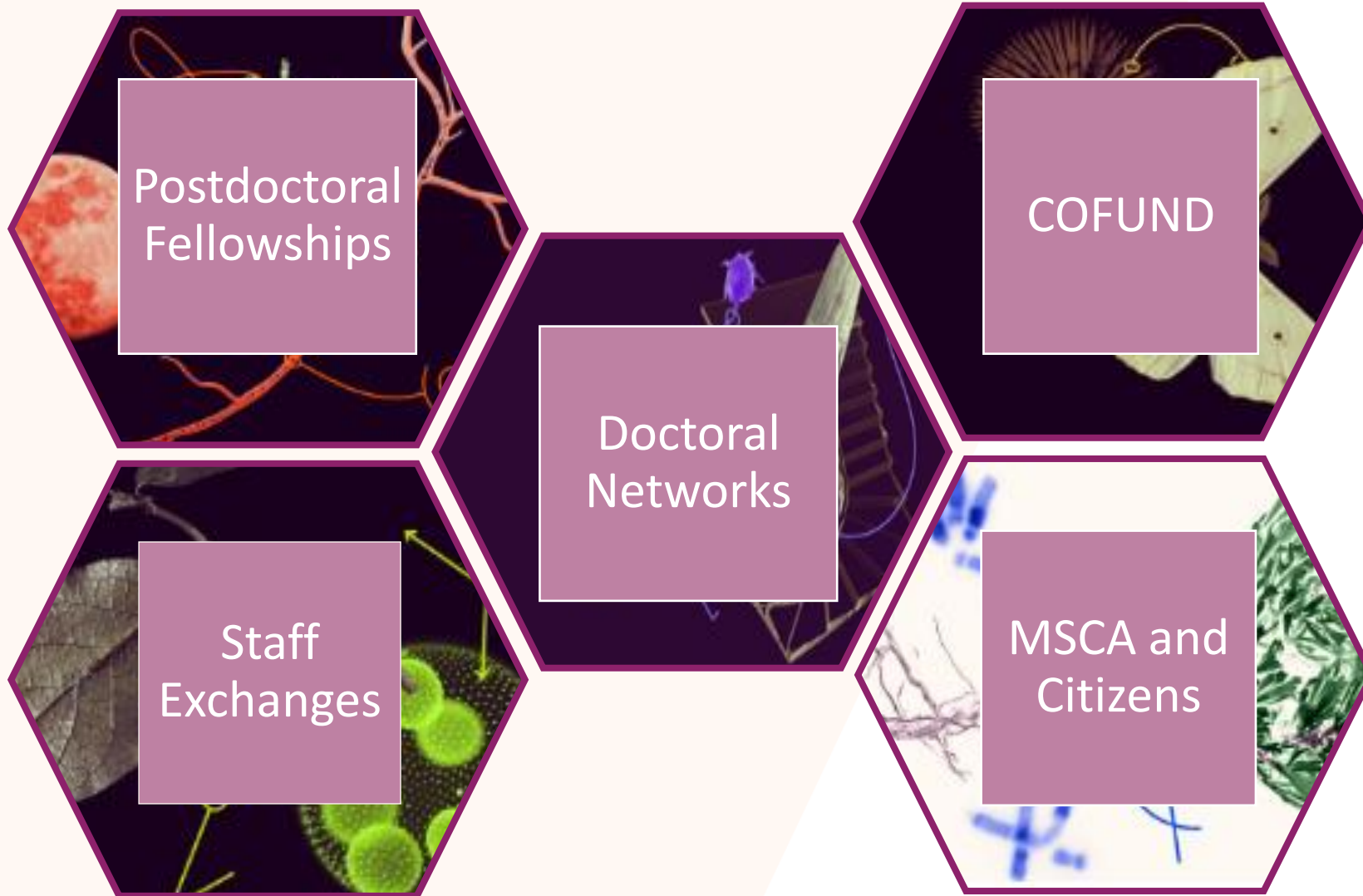
European Institute of
Innovation & Technology

WIDENING PARTICIPATION AND STRENGTHENING THE EUROPEAN RESEARCH AREA

Widening participation & spreading
excellence

Reforming & enhancing the European R&I
system

Marie Skłodowska-Curie Actions (MSCA)



Post Doctoral Fellowships (PFs)

Aim: to enhance the creative and innovative potential of researchers holding a PhD, wishing to acquire new skills through:

- Advanced training
- International, interdisciplinary and inter-sectoral mobility

Call opened: 08/05/2025

Call deadline: 10/09/2025

Budget: € 404M, made up of:

- European Fellowships: € 343.6M
- Global Fellowships: € 60.4M



Indication from last year's call: **average budget per funded project: € 178,000**

PFs - Key features

- For Postdoctoral researchers only
- Max. 8 years of postdoctoral research experience at the time of the call deadline
- Offers training and career development through research
- Secondments are encouraged
- Non-academic placements possible (up to 6 months, after the end of the project)
- Open to all research domains
- Two types:
 - European Fellowships
 - Global Fellowships

European Fellowships – EF

Researcher (PhD): Any Nationality

Single period

Beneficiary:

Located in EU Member State
or HE Associated Country



12-24 Months duration (including
optional secondments)

+ Optional non-academic placement (NAP), up to 6 months

Global Fellowships– GF

Researcher (PhD): National or long-term resident* of an EU Member State or HE Associated Country

Two periods:

- **Outgoing phase** – in a Third country, 12 – 24 months
- **Return phase:** at the beneficiary (EU Member State or HE Associated Country), 12 months



24-36 Months total duration (including
optional secondments)

* Definitions of the long-term resident given in Horizon Europe Work Programme 2023-2025 / 2. Marie Skłodowska-Curie Actions (European Commission Decision C(2024) 2371 of 17 April 2024)

** in GF: it's possible to include a max. 3-month max. secondment at the beneficiary at the start of project)

PFs – mobility rule, funding

Mobility rule: The researcher must not have resided or carried out his/her main activity (work, studies, etc.) in the host organisation's country for more than twelve months in the three years immediately prior to the call deadline.

EC unit contributions:

For the researcher:

- A living allowance €5,990 per month
- a mobility allowance €710 per month
- Family / long-term leave / special needs allowance (if applicable)

For the host institution:

- research, training and networking activities €1000 per person-month
- management and indirect costs €650 per person-month

Evaluation criteria

| 1. Excellence | 2. Impact | 3. Quality and efficiency of the implementation |
|---|--|---|
| 1.1 Quality and pertinence of the project's research and innovation objectives (and the extent to which they are ambitious, and go beyond the state of the art) | 2.1 Credibility of the measures to enhance the career perspectives and employability of the researcher and contribution to his/her skills development | 3.1 Quality and effectiveness of the work plan, assessment of risks and appropriateness of the effort assigned to work packages |
| 1.2 Soundness of the proposed methodology (including interdisciplinary approaches, consideration of the gender dimension and other diversity aspects if relevant for the research project, and the quality of open science practices) | 2.2 Suitability and quality of the measures to maximise expected outcomes and impacts, as set out in the dissemination and exploitation plan, including communication activities | 3.2 Quality and capacity of the host institutions and participating organisations, including hosting arrangements |
| 1.3 Quality of the supervision, training and of the two-way transfer of knowledge between the researcher and the host | 2.3 The magnitude and importance of the project's contribution to the expected scientific, societal and economic impacts | |
| 1.4 Quality and appropriateness of the researcher's professional experience, competences and skills | | |
| 50% | 30% | 20% |
| Criteria weighting | | |

PF – European Fellowship, example

Scenario: A Greek researcher is awarded a PhD in Germany in 2020 and is still residing in Germany. He applies for a European Fellowship together with a host institution in Greece.

Was he awarded a PhD before the Call deadline? Yes

Does he have less than 8 years' research experience since the award of the PhD ? Yes

Has he resided in Greece for less than 12 months in the 3 years previous to the call deadline? Yes

Conclusion: **Eligible**



PF – Global Fellowship, example

Scenario: A Chinese researcher moved to Greece the 4 years before the call deadline and was awarded a PhD in 2024. The beneficiary for the outgoing phase is in the USA and the beneficiary for the return phase is in France.

Was she awarded a PhD before the call deadline? Yes

Does she have less than 8 years' research experience since the award of the PhD ? Yes

Has she resided in the USA for less than 12 months in the 3 years previous to the call deadline? Yes

Has she been a “long-term resident” in an EU Member State / Associated Country (i.e. living 5 consecutive years)? No

Conclusion: **Ineligible**

Staff Exchanges

Objectives



International,
inter-sectoral
and
interdisciplinary
mobility of R&I
staff
(secondments)



Knowledge
transfer
between
participating
organisations



Collaboration
between the
academic and
non-academic
sectors
(including SMEs)

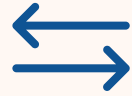


Cooperation
across the globe



Added value

Staff members



Transferable
skills &
competence
s



Employability
& career
prospects



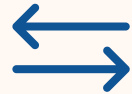
Ideas
converted
into products,
processes &
services



International
exposure



Networking &
communication



Transfer of
knowledge



Collaborative
networks



R&I capacity

Organisations

Staff Exchanges call: key information

Call Opened : 27/03/ 2025

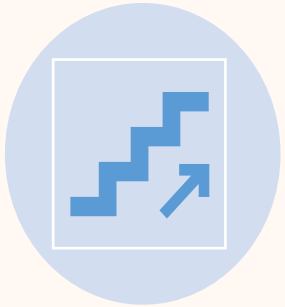
Deadline: 08/10/2025

Budget: € 97.7M

Indication from last year's call:

- Average budget per funded project: € 1.2M
- Average number of participants: 12

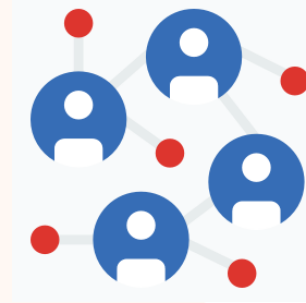
Staff Exchanges: key features



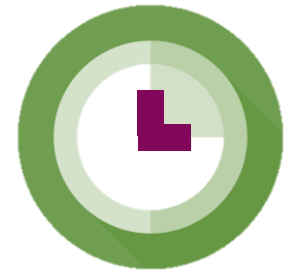
BOTTOM UP
with different
scientific panels



TOP UP ALLOWANCE
5010 €:
2710 € - staff allowance
2300 € - organisation



SECONDMENTS
1-12 months per staff
- Interdisciplinary
- Intersectoral
- International

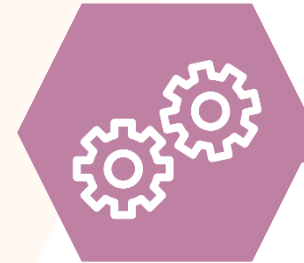


DURATION
4 years
360 person-months
per project (max)

Who can participate in MSCA-SE projects?

Consortium of min. **3 legal entities** in **3 different countries**, 2 of which in a different EU Member State or HE Associated Country

Academic sector



Non-academic sector

Eligible SE research consortia (for min of 3 entities)

If all 3 entities are
European
(MS/AC), one
should be **from a**
different sector



If all 3 entities
from **same sector**
(e.g. academic)
one must be
located outside
Europe



Eligible staff



Seconded staff members



Any type of staff involved in R&I activities (researchers, administrative staff, managerial staff, technical staff)

Researchers at any career stage (e.g. from doctoral candidates to postdoctoral researchers)

Actively engaged in research and/or innovation activities for at least **1 month** prior at the sending institution

Each staff member is seconded for a period of **1 to 12 months** (may be split into several stays)

Staff needs to be devoted **full-time** to the action during the secondment

After the secondment, staff should **return to their sending institution**

What does Staff Exchanges fund?



Budget of SE project based on the number of planned secondments

Evaluation criteria



| Excellence | Impact | Quality and efficiency of the implementation |
|--|--|---|
| Quality and pertinence of the project's research and innovation objectives (and the extent to which they are ambitious, and go beyond the state of the art) | Developing new and lasting research collaborations , achieving transfer of knowledge between participating organisations and contributing to improving research and innovation potential at the European and global level | Quality and effectiveness of the work plan , assessment of risks , and appropriateness of the effort assigned to work packages |
| Soundness of the proposed methodology (including i3 approaches, consideration of the gender dimension and other diversity aspects, and the quality of open science practices) | Credibility of the measures to enhance the career perspectives of staff members and contribution to their skills development | Quality, capacity and role of each participant, including hosting arrangements and extent to which the consortium as a whole brings together the necessary expertise |
| Quality of the proposed interaction between the participating organisations in light of the research and innovation objectives | Suitability and quality of the measures to maximise expected outcomes and impacts , as set out in the dissemination and exploitation plan, including communication activities | |
| | The magnitude and importance of the project's contribution to the expected scientific, societal and economic impacts | |
| 50% | 30% | 20% |

Doctoral Networks

Objective:

To implement doctoral programmes run by partnerships of organisations from different sectors across Europe and beyond, to:

- train highly skilled doctoral candidates
- stimulate their creativity
- enhance their innovation capacity
- boost their employability in the long-term

Call opened: 28/05/2025

Deadline: 25/11/2025

Budget: € 597.8M

Indication from last year's call:

- Average budget per funded project: € 3.5M
- Average number of participants: 18

Types of Doctoral Network

- **Doctoral Networks (standard):** Training in academia and/or industry
- **Industrial Doctorates:** Training in academia and industry, Joint supervision
- **Joint Doctorates:** Joint collaborations leading to a joint/double/multiple doctoral degree, Joint selection and supervision; pre-agreement for joint degrees required

Doctoral Networks – Modes of implementation

3 modes

DN

Doctoral Networks

*Participants implement
a joint research
programme*

DN-ID

**Doctoral networks
Industrial
Doctorates**

*Doctoral training with the
non-academic sector*

DN-JD

**Doctoral Networks
Joint
Doctorates**

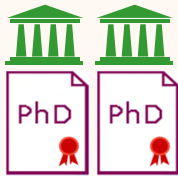
*Doctoral programme to
deliver joint degrees*

Attention: all 3 modes compete within the same scientific panels

Joint Doctorate – Degrees



Joint degree: single diploma issued by at least 2 academic institutions located in 2 different countries and recognised officially

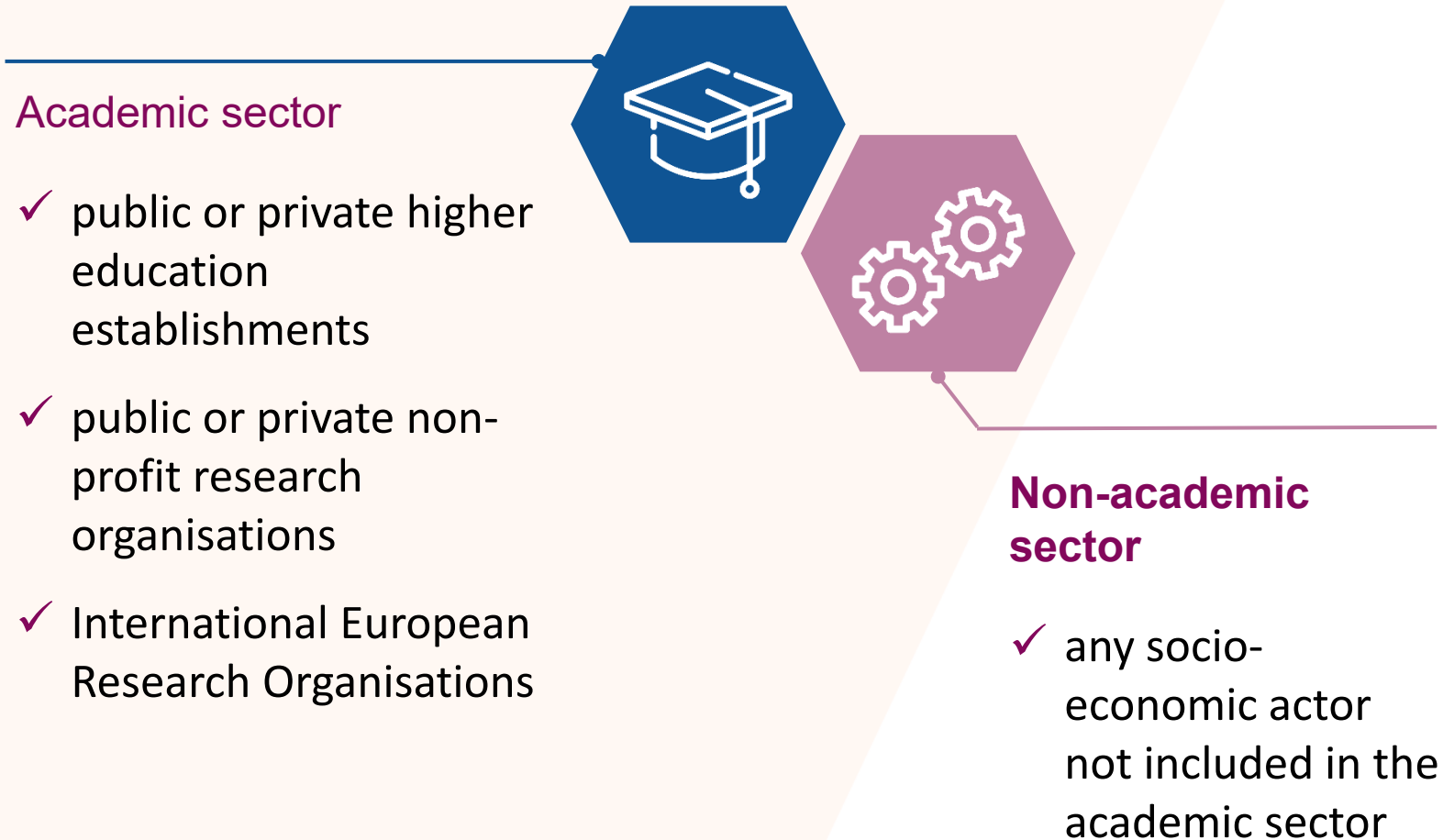


Double/multiple degree: 2 or more separate national diplomas issued by two or more higher education institutions located in different countries and recognised officially



Letters of pre-agreement to deliver joint/double doctoral degrees are mandatory in the proposal

Doctoral Networks – Academic / non-academic sectors



Doctoral Networks – Eligibility Conditions

- At least **3 independent legal entities**:
 - Each established in a different EU Member States or Horizon Europe Associated Country
 - Minimum of 1 beneficiary from an EU Member State
- **All beneficiaries must recruit at least 1 doctoral candidate.** They are required to host at their premises and supervise recruited researchers, or use associated partners linked to them to do so
- **Not more than 40.0% of the EU contribution may be allocated to beneficiaries in the same country** or to a single international organisation.

Doctoral Networks – Eligible Participants

- **Who can apply?**
 - Any Legal Entity from anywhere in the world
 - But not all applicants are automatically eligible for funding
- **Consortia** of:
 - Universities, research institutions and research infrastructures
 - Businesses including SMEs
 - Other socio-economic actors
- No minimum / maximum number of **Associated Partners**

Doctoral Networks – Eligible Researchers

- Researchers must be **doctoral candidates** (not already in possession of a doctoral degree at the date of recruitment)
- Be recruited following an **open, merit-based and transparent recruitment**
- Researchers must be **enrolled in a doctoral programme**, in at least 1 EU Member State/Associated Country (at least 2 for Joint Doctorates)
- **Any nationality**
- **Mobility rule**: must not have **resided or carried out main activity** in the country of the recruiting beneficiary for more than 12 months in the 36 months immediately before their recruitment date.

Doctoral Networks – Funding mechanism

Simplified Approach

- **1 unit cost** = 1 person-month of each eligible researcher
- 100% Reimbursement rate for eligible beneficiaries
- Different cost categories
 - Researcher's cost
 - Institutional costs (research, training, networking + management)

Doctoral Networks – Funding

| Contributions for recruited researchers Per person-month | | | | | Institutional unit contributions Per person-month | |
|---|--------------------|---------------------------------------|--|--|---|--------------------------------------|
| Living allowance | Mobility allowance | Family allowance** (if applicable) | Long-term leave allowance (if applicable) | Special needs allowance (if applicable) | Research, training and networking contribution | Management and indirect contribution |
| EUR 4010* | EUR 710 | EUR 660 | | | EUR 1000 | EUR 650 |

*A country correction coefficient applies to the living allowance in order to ensure equal treatment and purchasing power parity for all researchers

** A family allowance to contribute to mobility-related costs of researchers with family obligations which can be granted during the project.

Doctoral Networks: evaluation criteria

| Criteria | Excellence | Impact | Quality and efficiency of the implementation |
|--------------|--|---|---|
| Sub-criteria | Quality and pertinence of the project's research and innovation objectives | Contribution to structuring doctoral training at European level and strengthening European innovation capacity | Quality and effectiveness of the work plan, assessment of risks, and appropriateness of the effort assigned to work packages |
| | Soundness of the proposed methodology | Credibility of the measures to enhance the career perspectives of researchers and contribution to their skills development | Quality, capacity and role of each participant, including hosting arrangements and extent to which the consortium <u>as a whole brings together the necessary expertise</u> |
| | Quality and <u>credibility</u> of the training programme | Suitability and quality of the measures to <u>maximise</u> expected outcomes and impacts, as set out in the dissemination and exploitation plan, including communication activities | |
| | Quality of the supervision | The magnitude and importance of the project's contribution to the expected scientific, societal and economic impacts | |
| Weighting | 50% | 30% | 20% |

Other MSCA Actions: **COFUND**

Aim:

- to fund regional, national & international programmes for training and career development through co-funding mechanisms
- To spread best practices of MSCA by promoting high standards and excellent working conditions
- To promote international, interdisciplinary & inter-sectoral mobility

2 types of COFUND: doctoral programmes, postdoctoral programmes

Call deadline: 24/06/2025

Total budget for 2025: € 105.6M

Who can apply? A single legal entity, typically a government entity, regional authority or funding agency but can also be a university, research organisation and enterprise.

Other MSCA Actions: **MSCA and Citizens**

Aim:

- Increase awareness among the general public of the importance & benefits of research & innovation, and showcase its concrete impact on citizen's daily life.
- Heighten young people's interest in science and research careers

How?

- **European Researchers' night** – held every year on last Friday of September to combine education with entertainment e.g. exhibitions, science shows, competitions, hands-on experiments, etc.
- €16.3M to fund around 40 projects
- Deadline: 22/10/2025

Useful MSCA resources

EC MSCA website: <https://marie-sklodowska-curie-actions.ec.europa.eu/>

Webinars on MSCA hosted by EKT (presentations and video, mostly in Greek): <https://www.ekt.gr/el/tags/657/new>

Search vacancies for PhD candidates and Postdoctoral researchers on EURAXESS: <https://euraxess.ec.europa.eu/>

Guidelines for MSCA supervisors: <https://marie-sklodowska-curie-actions.ec.europa.eu/about-msca/msca-guidelines-on-supervision>



National Documentation Centre
56 Zefyrou str., GR-17564 Palaio Faliro, Greece
www.ekt.gr

Henry Scott,
MSCA NCP, Innovation Consultant
+30 210 2204918 | hscott@ekt.gr